

SUI Forum Demo v1.1.2

Index:

1. About
2. Features
3. System requirements
4. Usage notes
5. Support / Contact

1. About

SUI Forum is a FileMaker application that performs like a traditional web-based forum. Each user can create topics and post messages. One specific user can be assigned to moderate the forum.

SUI Forum is designed to operate in standalone mode or as part of an existing [FileMaker](#) solution. Version 1.1 supports FileMaker's Instant Web Publishing.

2. Features

- Instant Web Publishing
- Text search
- Moderation tools
- Quick message view
- Preferences

Note: All product features are available in this Demo version. The non-demo version is fully unlocked and can be customized to seamlessly integrate with an external solution.

3. System Requirements

SUI Forum requires one of the following FileMaker products installed on your system:

- FileMaker Pro 8.5
- FileMaker Pro 8.5 Advanced
- FileMaker Pro 9
- FileMaker Pro 9 Advanced
- FileMaker Pro 10
- FileMaker Pro 10 Advanced
- FileMaker Pro 11
- FileMaker Pro 11 Advanced

4. Usage notes

Use the following predefined accounts to login to SUI Forum Demo:

user1
user2
user3

user4
user5
moderator

A password is not required for any of the accounts.

The user accounts can access all SUI Forum features but cannot access or modify layouts, scripts or data. The moderator account can edit and delete both messages and topics.

Additional accounts cannot be created in Demo mode.

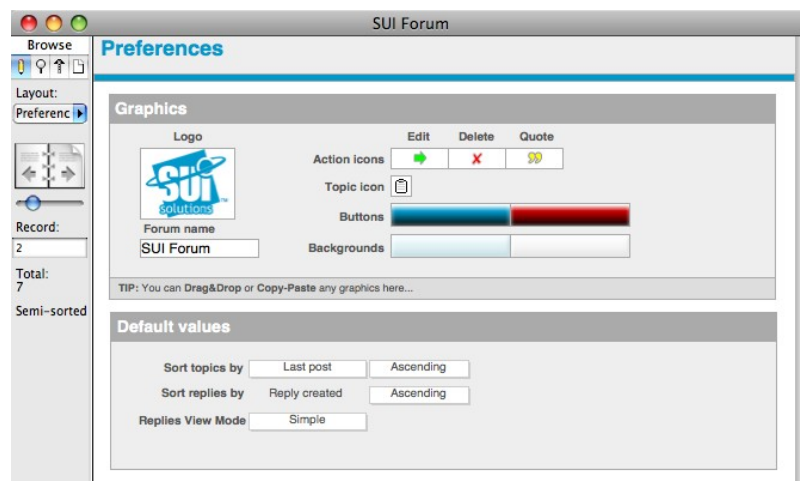
For using SUI Forum in a multi-user environment, it is strongly recommended to install the program on a FileMaker server.

Enabling Instant Web Publishing:

- Open SUI Forum
- Go to File -> Sharing -> Instant Web Publishing... (use: FileMaker Pro -> Sharing -> Instant Web Publishing... (Mac) OR Edit -> Sharing -> Instant Web Publishing...(PC))
- Switch Instant Web Publishing button to On.
- Select SUI Forum in the Currently Open files list.
- Set up access privileges.

Preferences:

The Preferences layout for SUI Forum allows for basic template customization, including icon graphics, sorting options, logo and more.



To access the Preferences layout, open SUI Forum locally and login using the [Full Access] account. Go to View -> Status Area and select the Preferences layout from drop-down list.

Note: In the Demo version, you cannot change preferences on this layout since no [Full Access] account exists.

5. Support / Contact

When you are finished evaluating our product, please visit our web site or contact us by e-mail. We welcome your feedback and would be happy to assist you in purchasing the Unlimited or Developer version of our product:

[http://filemaker.suisolutions.com/products/sui_forum/
info@suisolutions.com](http://filemaker.suisolutions.com/products/sui_forum/info@suisolutions.com)

For troubleshooting, product suggestions or comments on how to improve our product, please e-mail us at:

fmsupport@suisolutions.com

For information on our other products, please visit our web site:

<http://filemaker.suisolutions.com/products/>

Copyright (C) 2006-2011 SUI SOLUTIONS. All rights reserved.